

HP-UX Development Environment for Eclipse

Version: 4.0.0

October 2010

Installation Guide



invent

Printed in the US

Legal Notices

© Copyright 2010 Hewlett-Packard Development Company, L.P.

Confidential computer software. Valid license from HP required for possession, use or copying. Consistent with FAR 12.211 and 12.212, Commercial Computer Software, Computer Software Documentation, and Technical Data for Commercial Items are licensed to the U.S. Government under vendor's standard commercial license.

The information contained herein is subject to change without notice. The only warranties for HP products and services are set forth in the express warranty statements accompanying such products and services. Nothing herein should be construed as constituting an additional warranty. HP shall not be liable for technical or editorial errors or omissions contained herein.

Acknowledgments

Microsoft®, Windows®, and Windows NT® are U.S. registered trademarks of Microsoft Corporation.

Intel®, Pentium®, Itanium®, Intel Inside®, and the Intel Inside logo are trademarks or registered trademarks of Intel Corporation or its subsidiaries in the United States and other countries.

Linux® is a U.S. registered trademark of Linus Torvalds.

Eclipse® is a trademark of Eclipse Foundation Inc.

Table of Contents

| | |
|---|----|
| INTRODUCTION | 4 |
| PREREQUISITES..... | 4 |
| INSTALLATION INSTRUCTIONS | 6 |
| FOR REMOTE HP SERVER | 6 |
| FOR MICROSOFT WINDOWS AND LINUX DESKTOP | 6 |
| CONNECTING YOUR DESKTOP TO THE HP REMOTE SERVER..... | 11 |
| CONNECTING FROM A MICROSOFT WINDOWS SYSTEM | 11 |
| • <i>Configure Samba</i> | 11 |
| • <i>Create a Network Drive</i> | 11 |
| • <i>Protocols Used</i> | 13 |
| CONNECTING FROM A LINUX SYSTEM | 13 |
| • <i>Create a Network Drive</i> | 13 |
| • <i>Protocols Used</i> | 13 |
| GETTING STARTED WITH REMOTE DEVELOPMENT | 14 |
| TECHNICAL SUPPORT | 15 |

Introduction

This document describes the procedure to install and setup all software required to begin remote development in Eclipse. It also outlines the steps required to connect your Windows or Linux desktop to the HP-UX remote server to enable remote development in Eclipse.

Disclaimer: One or more of the links in this document will take you outside the Hewlett-Packard website. HP does not control and is not responsible for information outside the HP website.

Prerequisites

To install the HP-UX Development Environment for Eclipse, you must have the requisite software installed on the remote HP-UX server and on your local desktop. The installation instructions follow the prerequisites.

- **Microsoft Windows Desktop**

Table 1: Software for Windows

| Software | Version | URL/Note |
|---|---|---|
| Eclipse Classic | 3.6.x | http://eclipse.org/downloads/index.php |
| CDT- Eclipse C/C++ Development Tooling | 7.0.0 | http://eclipse.org/cdt/downloads.php |
| Java Runtime Environment(JRE) | version 1.6.0_xx ; for example: 1.6.0_13 | http://java.sun.com/javase/downloads/index.jsp |
| HP-UX Development Environment for Eclipse | 4.0.0 | http://www.hp.com/go/eclipse-remotedevplugin |
| Operating System (OS) details | Any Microsoft Windows system where Eclipse 3.6.x is supported | |

- **Linux Desktop**

Table 2: Software for Linux

| Software | Version | URL/Note |
|---|---|--|
| Eclipse Classic | 3.6.x | http://eclipse.org/downloads/index.php |
| CDT- Eclipse C/C++ Development Tooling | 7.0.0 | http://eclipse.org/cdt/downloads.php |
| Java Runtime Environment(JRE) | version 1.6.0_xx ; for example: 1.6.0_13 | http://java.sun.com/javase/downloads/index.jsp |
| HP-UX Development Environment for Eclipse | 4.0.0 | http://www.hp.com/go/eclipse-remotedevplugin |
| Operating System (OS) details | Any SUSE Linux (or) Red Hat Linux system where Eclipse 3.6.x is supported | Remote shell (<code>rsh</code>) or Secure Shell (<code>ssh</code>) must be enabled on Linux installation |

Note: Do not update CDT with later versions.

- **Remote HP Integrity Server (Itanium/PA-RISC systems)**

Table 3: Software for HP Integrity Servers

| Software | Version | URL/Note |
|-----------------------------|---------------------------------|---|
| HP GDB | 6.1 | http://www.hp.com/go/wdb |
| HP aCC | 06.25.01 for IA 03.90 for PA | http://www.hp.com/go/c++ |
| CIFS server (Samba)* | A.02.03.04 | http://h20293.www2.hp.com/portal/swdepot/displayProductInfo.do?productNumber=B8725AA |
| HP Code Advisor (cadvise) | C.02.15 or later versions | http://www.hp.com/go/cadvise |
| HP-UX Operating Environment | 11iv2 or above versions | |

* For Linux systems, the CIFS Server (Samba) on the remote HP-UX machine need not be installed. The file structure from the HP Integrity / HP 9000 server is exported to a Linux system by using the [mount](#) command.

Installation Instructions

To install the HP-UX Development Environment for Eclipse, follow the procedure based on the system you are using.

- [For Remote HP Server](#)
- [For Microsoft Windows and Linux Desktop](#)

For Remote HP Server

1. Ensure that HP-UX OS 11iv2 or later is installed in the remote HP-UX Integrity server.
2. Download and install HP GDB from <http://www.hp.com/go/wdb>.
 - The Installation Guidelines are provided in the same webpage.
 - In the HP WDB section, click **Download latest release** or **Download archived versions**.
3. Download and install the HP aCC compiler from <http://www.hp.com/go/c++>.
4. Download and install the CIFS server (Samba) from <http://h20293.www2.hp.com/portal/swdepot/displayProductInfo.do?productNumber=B8725AA>
The Installation link from that webpage can be used to install Samba.

For more information on remote system configuration, see [Connecting your desktop to the HP remote server](#).

Note: Your HP-UX system administrator should be able to help you install and configure Samba.

For Microsoft Windows and Linux Desktop

Note: If a user has an existing Eclipse installation that meets the requirements they can install [HP-UX Development Environment for Eclipse](#) directly otherwise they need to create a separate installation.

1. Download and install JRE from <http://java.sun.com/javase/downloads/index.jsp>.
2. Install Eclipse
 - i. Go to <http://www.eclipse.org/downloads/>.
 - ii. Download **Eclipse Classic 3.6.x**.
 - iii. To install Eclipse, extract the downloaded ZIP file to the desired parent directory. When you UNZIP the file, it creates a subdirectory called "*eclipse*", with multiple subdirectories under it. For example, in Microsoft Windows, if you extract the ZIP file to the root directory (C:\), Eclipse would be installed in C:\eclipse. Note that installing Eclipse does not change the Microsoft Windows registry. No further work is required to install Eclipse (other than ensuring that you have a Java Runtime Engine installed).
For more information on installing Eclipse, see http://wiki.eclipse.org/index.php/The_Official_Eclipse_FAQs.

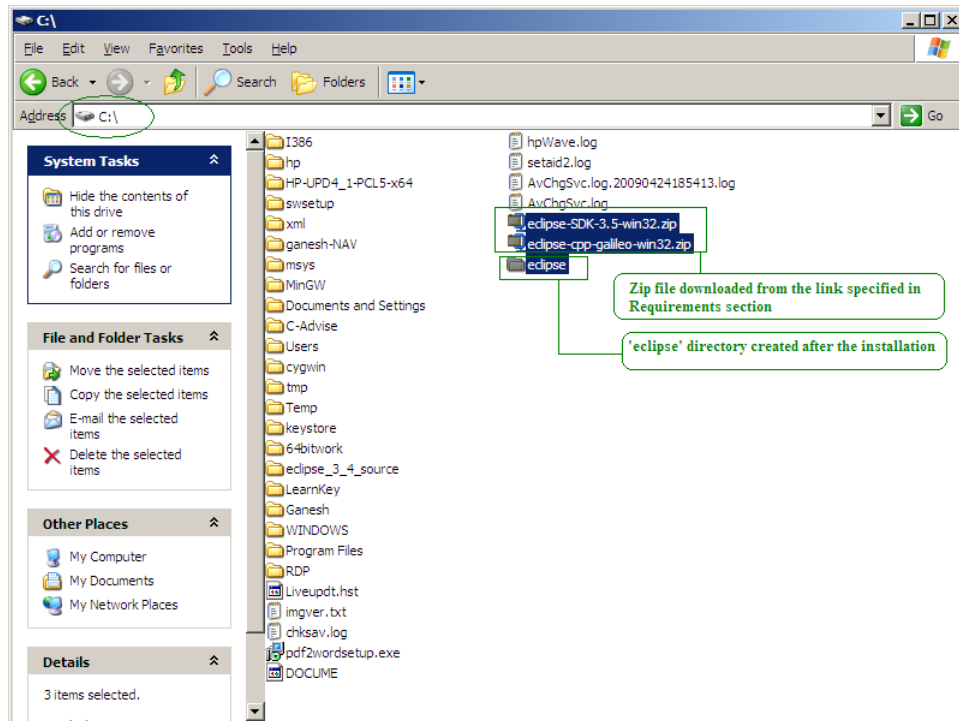


Figure 1: Eclipse Installation

3. Install CDT (C/C++ Development Toolkit)

- i. Download **cdt-master-7.0.0-I201006141710.zip** from <http://download.eclipse.org/tools/cdt/releases/helios/> (Click on 7.0.0 link present in the URL mentioned.)
(For example, if you are using Microsoft Windows, download the zip file to `c:\CDT`. If you are using Linux, download the zip file to `/space/CDT`).
- ii. Enable Eclipse by executing the executable inside the `eclipse` directory, which was created in [step 2.iii](#) above.
- iii. When Eclipse comes up for the first time, create a workspace directory.
- iv. Select **Help** → **Install New Software...** (Sample screenshot - Figure 2).
- v. Click **ADD** command button on **Available software page** (sample screenshot - Figure 3).
- vi. Give a name to the site. For example: `CDT`. See Figure 4 for a sample.
- vii. Click **Archive** and **Browse** to select the zip file that was downloaded in [step 3-i](#) above. (For example, if you are using Microsoft Windows, select `c:\CDT\cdt-master-X.X.X.zip`. If you are using Linux, select `/space/CDT/cdt-master-X.X.X-IXXXX.zip`). Click **OK**.
- viii. **Select** the added feature, **CDT Main Features** and **CDT Optional Features** (Note:- **CDT Optional Features** is optional) and click **Next**.
- ix. Click **Next** again to accept the license agreements and click **Finish**.
- x. Don't Restart Eclipse now. Eclipse can be restarted once **HP-UX Development Environment for Eclipse** is installed.

4. Install the **HP-UX Development Environment for Eclipse:**
 - i. Download the **HP_RemoteDev_X.X.X.zip** file from <http://www.hp.com/go/eclipse-remotedevplugin>. (For example, if you are using Microsoft Windows, download the zip file to c:\RDP. If you are using Linux, download the zip file to /space/RDP).
 - ii. Enable Eclipse by executing the executable inside the `eclipse` directory, which was created in [step 2.iii](#) above. When Eclipse comes up for the first time, create a workspace directory. [**Note:** - This step is invalid for Eclipse Classic Users since they might have brought UP the eclipse at [step 3-ii](#)].
 - iii. When Eclipse comes up for the first time, create a workspace directory. [Note:- This step is invalid for Eclipse Classic Users since they might have created at [step 3-iii](#)]
 - iv. Select **Help→Install New Software...** (Figure 2).

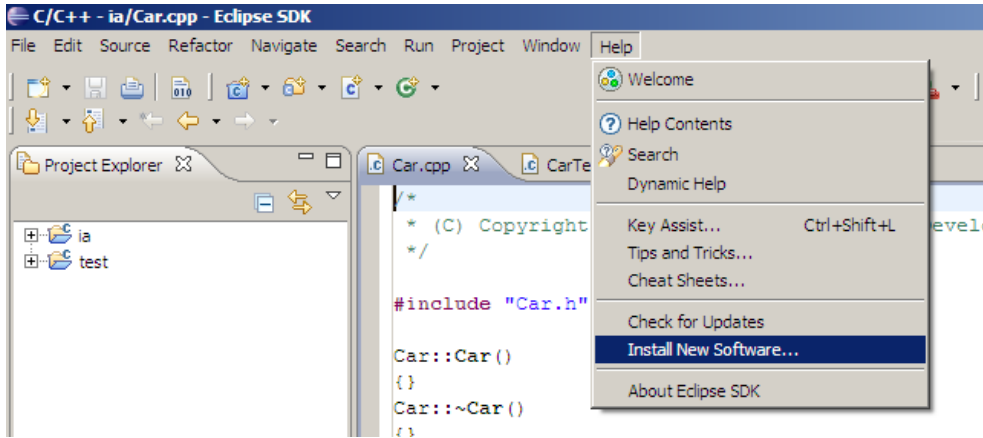


Figure 2: Software Update

- v. Click **ADD** command button on **Available software page** (Figure 3).

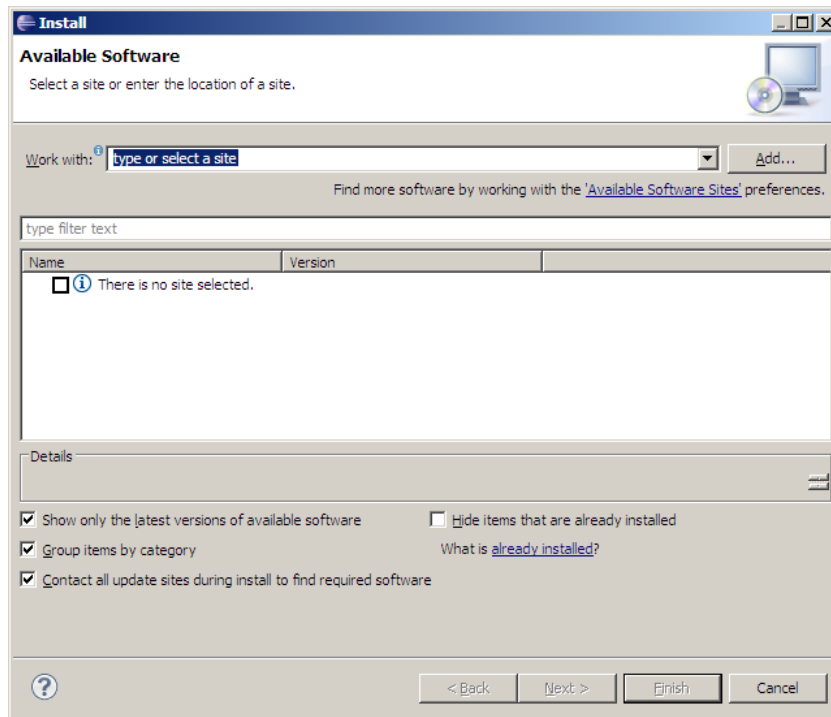


Figure 3: Software Updates and Add-ons Page

- vi. Give a name to the site. For example: RDP.
- vii. Click **Archive** and Browse to select the zip file that was downloaded in [step 4-i](#) above. (For example, if you are using Microsoft Windows, select `c:\RDP\HP_RemoteDev_X.X.0.zip`. If you are using Linux, select `/space/RDP/HP_RemoteDev_X.X.0.zip`). Click **OK**.

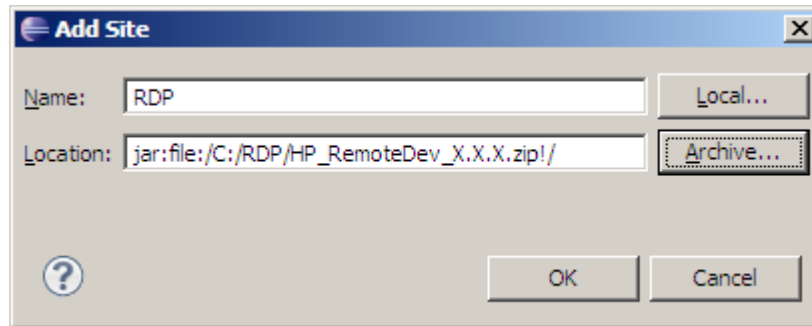


Figure 4: Add Site Dialog Box

- viii. **Select** the newly added feature, HP-UX Development Environment for Eclipse, and click **Next**.

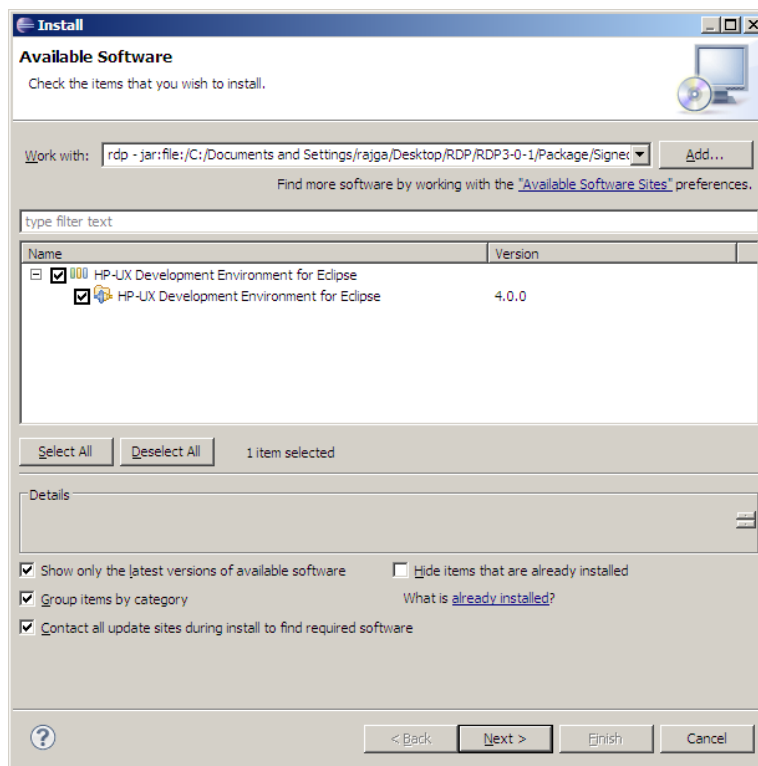


Figure 5: Software Updates and Add-ons

- ix. Again click **Next**, accept the license agreements and click **Finish**.
- x. Restart Eclipse.

5. Verify if the Plug-in is installed:
 - i. From the Menu bar, select **Help** -> **About Eclipse SDK**.

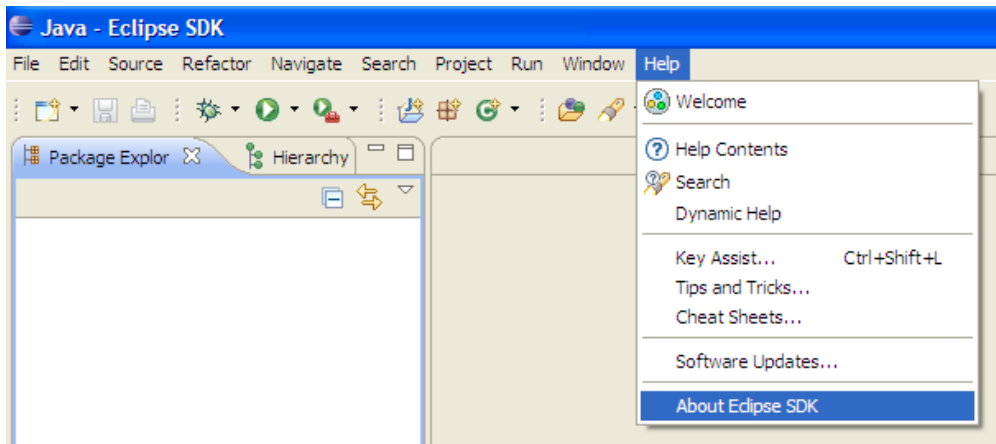


Figure 6: About Eclipse SDK

- ii. To view the list of plug-ins installed in Eclipse, click **Installation Details** and select **Plug-ins** tab. look for "Hewlett-Packard Development Company" in the provider column.

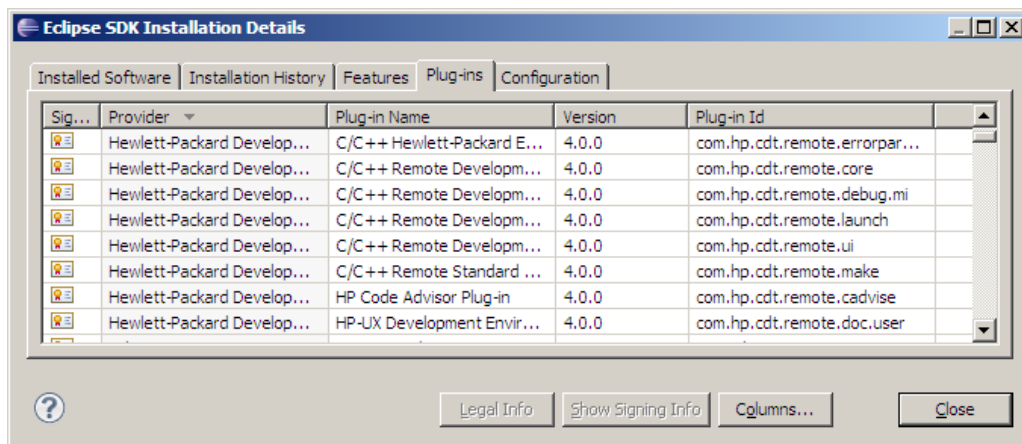


Figure 7: List of Plug-ins Installed in Eclipse

Connecting your Desktop to the HP Remote Server

This section describes the procedure to connect your desktop to the HP remote Server.

- [Connecting from a Microsoft Windows system](#)
- [Connecting from a Linux system](#)

Connecting from a Microsoft Windows system

You must complete the following steps to connect your Windows system to the remote server.

- [Configure Samba](#)
- [Create a Network Drive](#)
- [Protocols Used](#)

- **Configure Samba**

1. Create a user ID in the remote HP-UX machine. Ignore this step if you already have a user ID in the remote machine.
2. On the remote HP-UX server, type the following in the `.rhosts` file in your home directory:

```
<Host name/IP address of local machine> < HP-Unix User id>
```

For example:

```
19.155.39.58 rajga
```

Note: If the `.rhosts` file is not already present in the home directory, create the file and enter the path.

3. Under `/etc/opt/samba`, modify the Samba configuration `smb.conf` file.

For example, for the user `rajga`:

```
[rajga]
  path = /space/eclipse/rajga
  valid users = rajga
```

4. Stop and restart the Samba service.
5. Create a network drive, as explained below, in the local Windows machine.

Note: Your HP-UX system administrator should be able to help you configure Samba.

- **Create a Network Drive**

1. Click **My Computer** on your desktop.
2. From the menu bar, select **Tools**.
3. Select **Map Network Drive**.

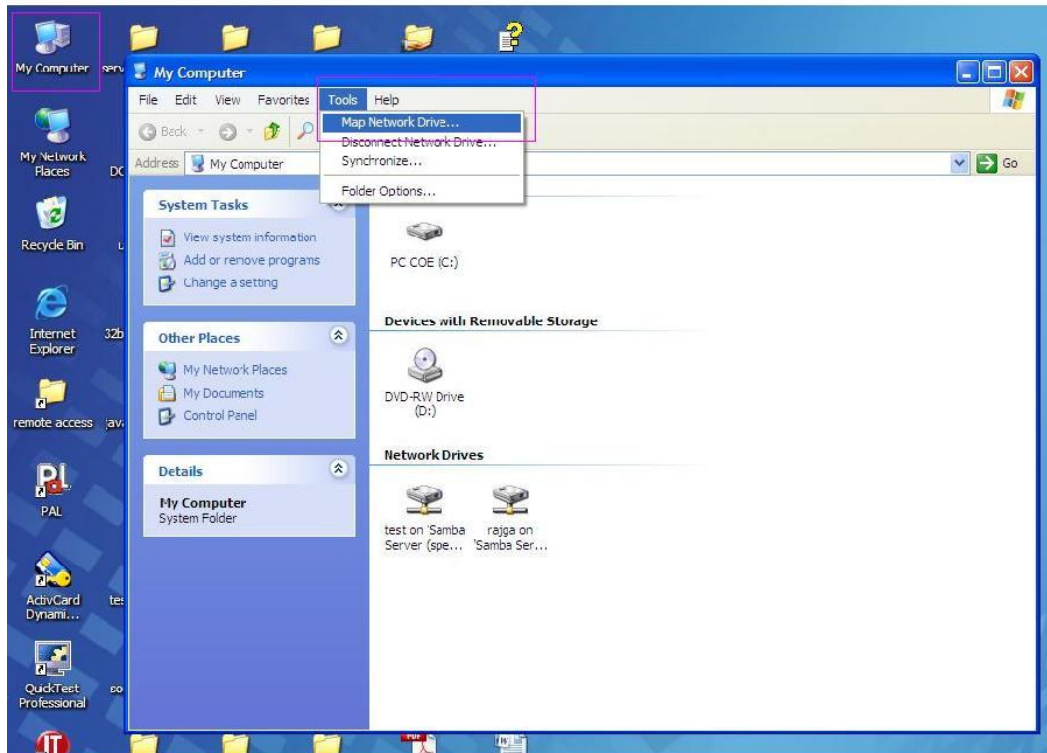


Figure 8: Create Map Drive

4. In the Drive field, select an unused drive letter.
For example, you can select Z: as the Drive.
5. In the Folder field, type **\\server\share**.
For example, [\\spec.ind.hp.com\rajga](https://spec.ind.hp.com/rajga) can be the folder name.
6. Click **Finish**.

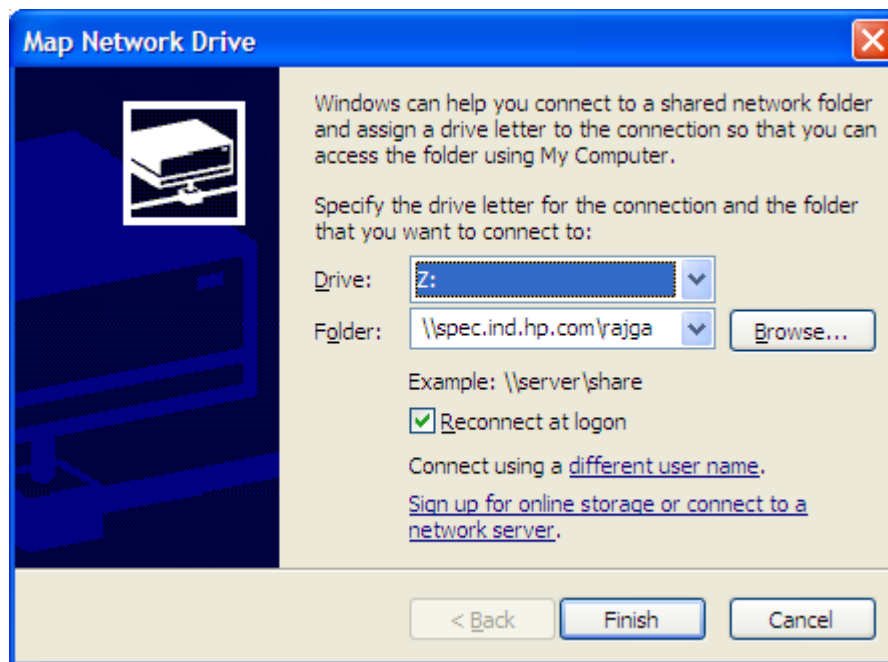


Figure 9: Map Network Drive Dialog Box

7. To ensure that the network drive is created properly, verify the files from the created network drive (from Windows system) with the files of remote server (use `telnet/rsh/ssh` connection).

- **Protocols Used**

You can use either the `osrlogin` (uses `rsh` as default) or the `ssh` protocol. To setup the `ssh` connection, see the [HP Remotedev SSH SetUp](#) document.

Connecting from a Linux system

You must complete the following steps to connect your Linux system to the remote server.

- [Create a Network Drive](#)
- [Protocols Used](#)

- **Create a Network Drive**

1. Log in as a root user.
2. Type the NFS `mount` command to mount the file system from the remote HP-UX system to the local Linux system.

For example:

```
mount -t nfs spec.ind.hp.com:/space/eclipse/rajga /space/eclipse/rajga/map-drive1
```

Note: Your HP-UX Administrator should be able to help you create a network drive from your Linux system.

- **Protocols Used**

You can use either the `rsh` (default) or the `ssh` protocol. To set up the `ssh` connection, see the [HP Remotedev SSH SetUp](#) document.

Getting Started with Remote Development

After installing the plug-in, start with the online help tutorial available in Eclipse.

- To view the Online Help, from the menu bar, click **Help > Help Contents** (or) **Help → Welcome → Overview → HP-UX Development Environment for Eclipse**.

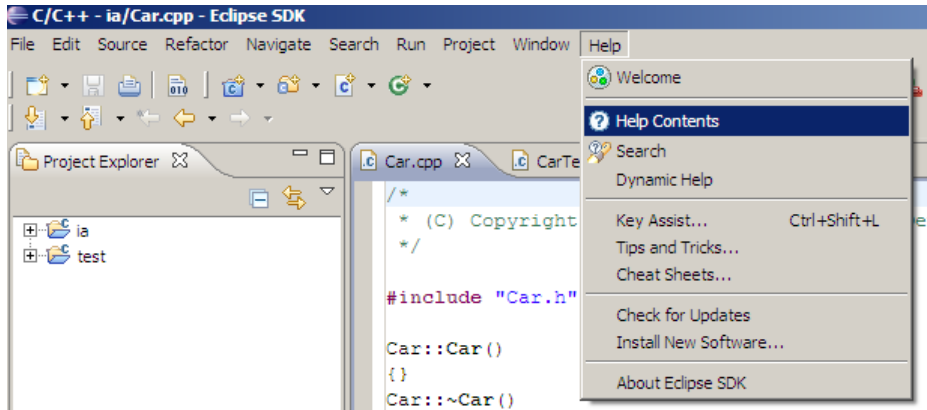


Figure 10: Accessing Online Help

- To view the plug-in online help, click **HP-UX Development Environment for Eclipse User Guide > Getting Started**. The User Guide is also available at: <http://www.hp.com/go/eclipse-remotedevplugin>

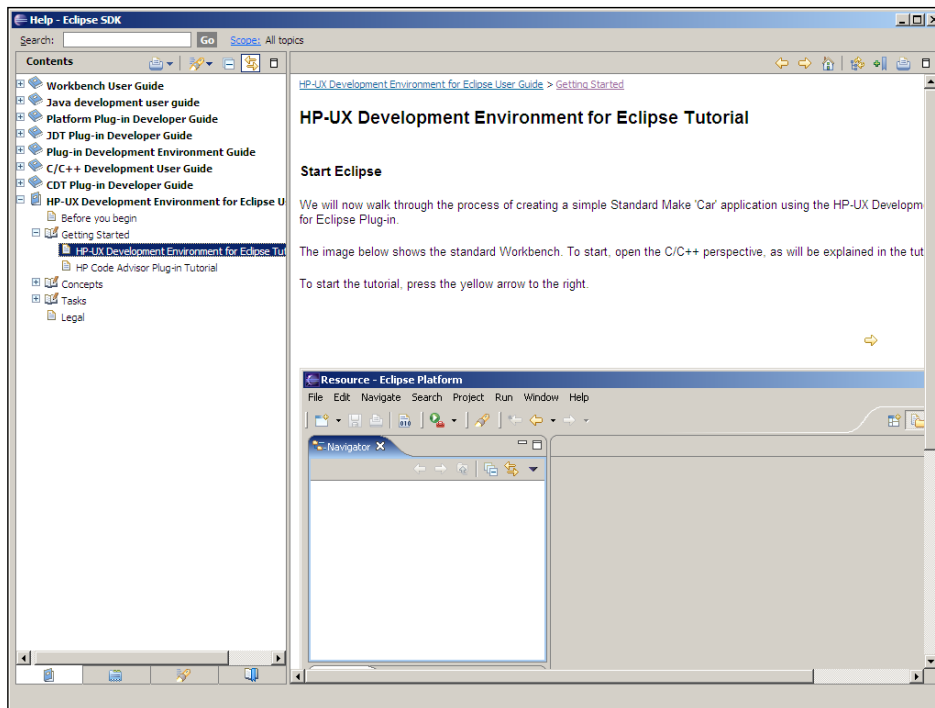


Figure 11: Plug-in Tutorial

- Cheat sheet for creating Remote C/C++ project can be accessed from **Help→Cheat Sheets...→Remote C/C++ Development→Creating Remote C/C++ Projects**.

Technical Support

For any issues related to installation or using the HP-UX DEE, mail:
eclipse-plugins@lists.hp.com